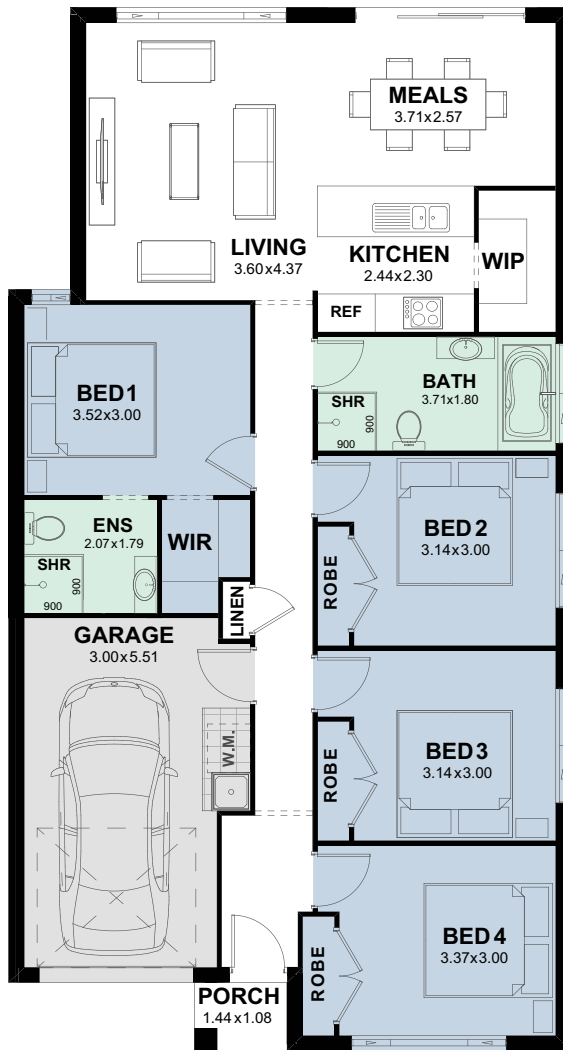


Irvine 15

Trend
Connection
Homes —



Total Area (m²) 136.39
Squares 14.68



designed for
Narrow Blocks.

Features

- Open-plan living, dining and kitchen area
- Large walk-in-pantry
- Master suite with large walk-in-robe and ensuite

Specifications

House Width:	8.75m
House Length:	16.43m
House Size Squares:	14.68 ^{SQ}
House Area:	136.39m ²
Suits Land Width:	9.90m
Suits Land Depth:	24.00m
Garage:	19.98m
Porch:	1.56m
Living Area:	114.85m

Individual block suitability is based upon CDC greenfield setbacks and is subject to a full site analysis by our new home consultant. Contact one of our new home consultants for more information. Floorplans are not drawn to scale, should be used as a guide only and are drawn based on the standard façade. The layout and size of the home may vary depending on the chosen façade. Floorplans depict items not provided by Trend Connection Homes including; furniture and vehicles. Refer to working drawings for more information. The plans, facades and images shown are the exclusive property of Trend Connection Homes and must not be used, reproduced or copied wholly in any way without permission.