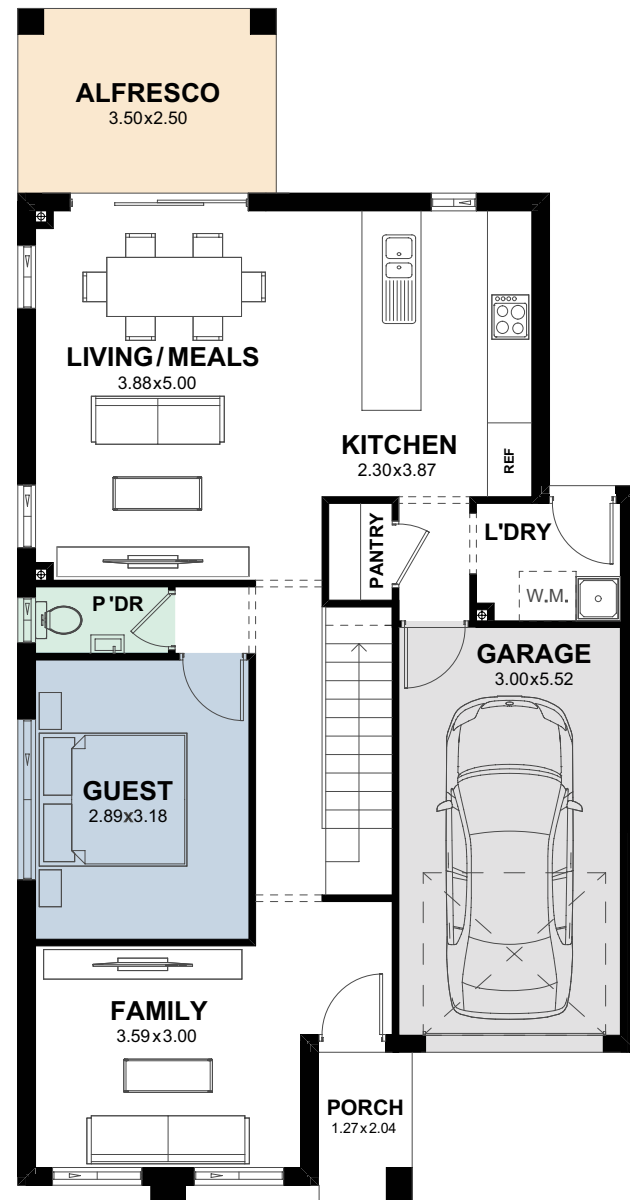


Dublin 21

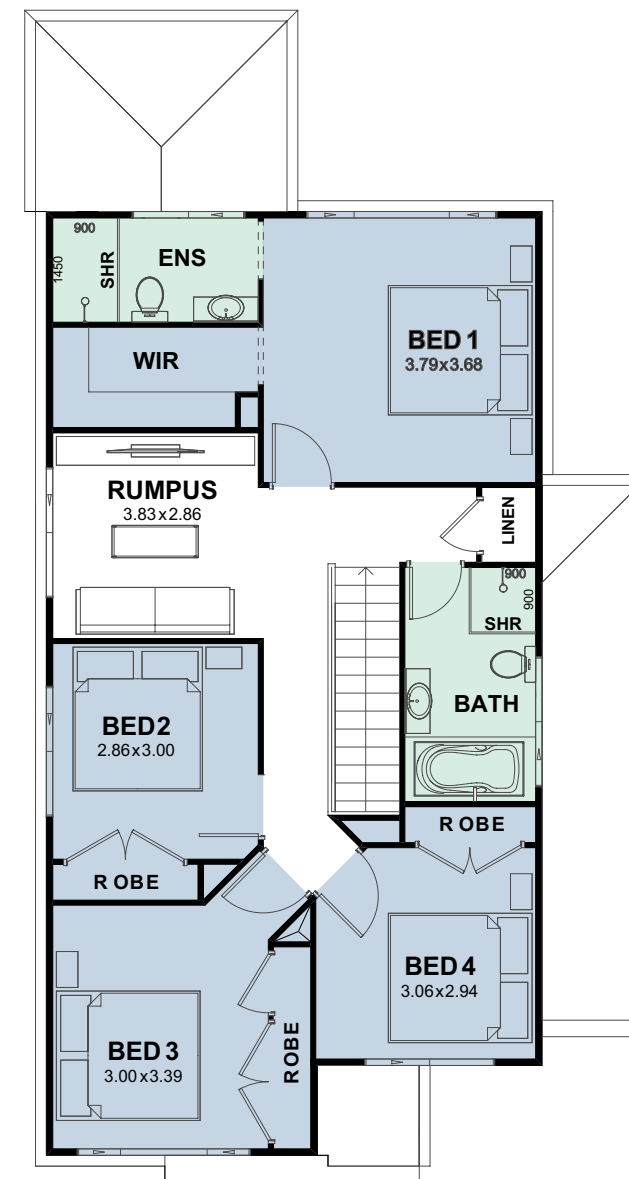
Trend
Connection
Homes

5 3 2.5 1

Total Area (m²) 198.28
Squares 21.34



Ground
Floor



First
Floor

Features

- Open-Plan living, dining and kitchen area
- Large walk-in pantry
- Kids breakout area
- Guest room
- Master Suite with large walk-in-robe and ensuite
- Alfresco
- Upstairs rumpus room

Specifications

House Width:	8.40m
House Depth:	16.17m
House Size Squares:	21.34^{SQ}
House Area:	198.28m²
Suits Land Width:	9.55m
Suits Land Depth:	23.50m

Ground Floor Living:	81.65m²
First Floor Living:	86.68m²
Garage:	18.63m²
Porch:	2.57m²
Alfresco:	8.75m²

Individual block suitability is based upon CDC greenfield setbacks and is subject to a full site analysis by our new home consultant. Contact one of our new home consultants for more information. Floorplans are not drawn to scale, should be used as a guide only and are drawn based on the standard façade. The layout and size of the home may vary depending on the chosen façade. Floorplans depict items not provided by Trend Connection Homes including: furniture and vehicles. Refer to working drawings for more information. The plans, facades and images shown are the exclusive property of Trend Connection Homes and must not be used, reproduced or copied wholly in any way without permission.

designed for
Regular Blocks.

