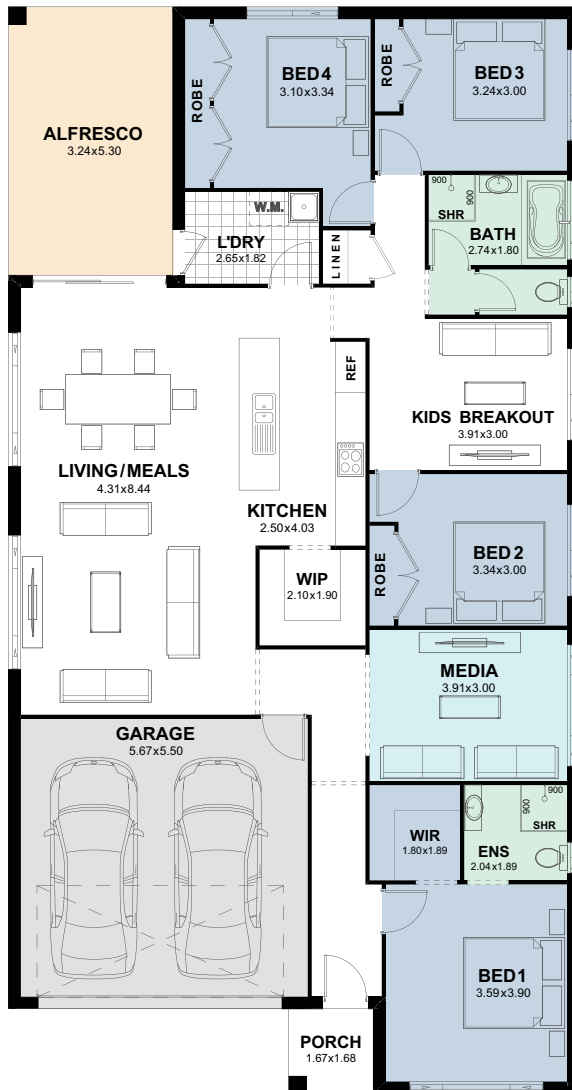


Cairo 25

Trend
Connection
Homes —



Total Area (m²) 232.56
Squares 25.03



designed for
Standard Blocks.

Features

- Open-plan living, dining and kitchen area
- Alfresco entertaining
- Master suite with large walk-in-robe and ensuite
- All bedrooms with built-in-robos
- Kids breakout
- Double garage

Individual block suitability is based upon CDC greenfield setbacks and is subject to a full site analysis by our new home consultant. Contact one of our new home consultants for more information. Floorplans are not drawn to scale, should be used as a guide only and are drawn based on the standard façade. The layout and size of the home may vary depending on the chosen façade. Floorplans depict items not provided by Trend Connection Homes including; furniture and vehicles. Refer to working drawings for more information. The plans, facades and images shown are the exclusive property of Trend Connection Homes and must not be used, reproduced or copied wholly in any way without permission.

Specifications

House Width:	11.27m
House Length:	21.46m
House Size Squares:	25.03 ^{SQ}
House Area:	232.56m ²
Suits Land Width:	13.20m
Suits Land Depth:	29.00m
Alfresco:	17.17m
Garage:	34.68m
Porch:	2.81m
Living Area:	177.90m