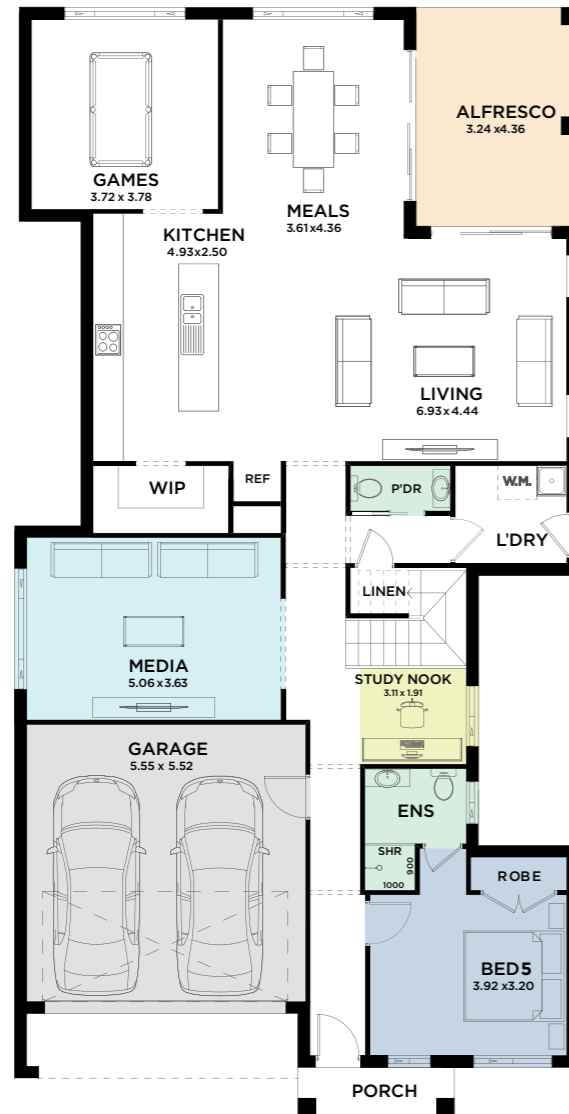


# Vienna 37

Trend  
Connection  
Homes —

5 3 3.5 2

Total Area (m<sup>2</sup>) 341.14  
Squares 36.72



Ground  
Floor



First  
Floor

## Features

- Open-plan living, dining and kitchen area
- Alfresco area
- Downstairs family room/Formal lounge
- Downstairs powder room
- Media room
- Study area
- Alfresco

## Specifications

House Width:	11.23m
House Length:	22.07m
House Size Squares:	36.72 <sup>SQ</sup>
House Area:	341.14m <sup>2</sup>
Suits Land Width:	13.20m
Suits Land Depth:	28.60m

Ground Floor Living:	164.43m <sup>2</sup>
First Floor Living:	126.30m <sup>2</sup>
Garage:	33.29m <sup>2</sup>
Porch:	2.99m <sup>2</sup>
Alfresco:	14.13m <sup>2</sup>

Individual block suitability is based upon CDC greenfield setbacks and is subject to a full site analysis by our new home consultant. Contact one of our new home consultants for more information. Floorplans are not drawn to scale, should be used as a guide only and are drawn based on the standard façade. The layout and size of the home may vary depending on the chosen façade. Floorplans depict items not provided by Trend Connection Homes including: furniture and vehicles. Refer to working drawings for more information. The plans, facades and images shown are the exclusive property of Trend Connection Homes and must not be used, reproduced or copied wholly in any way without permission.

designed for  
Regular Blocks.

