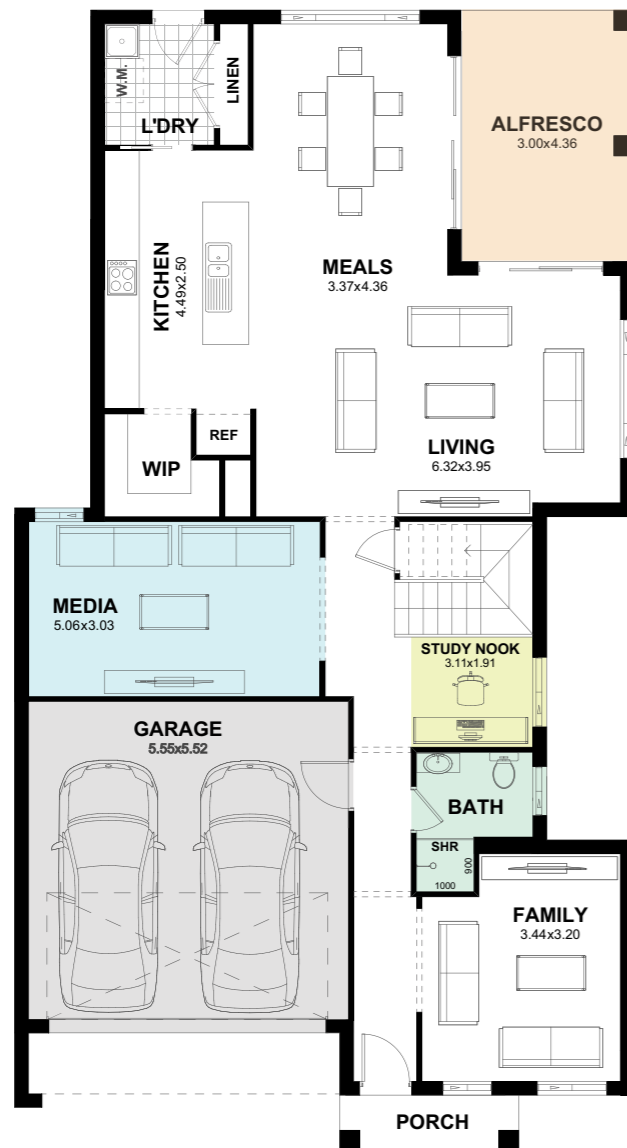


Vienna 31

Trend
Connection
Homes —

4 3 3 2

Total Area (m²) 292.58
Squares 31.49



Ground
Floor



First
Floor

Features

- Open-plan living, dining and kitchen area
- Large walk-in pantry
- Downstairs family room/Formal Lounge
- Downstairs powder room
- Master suite with large walk-in-robe and ensuite
- Study nook
- Kids breakout area

Specifications

House Width:	10.75m
House Length:	19.79m
House Size Squares:	31.49 ^{SQ}
House Area:	292.58m ²
Suits Land Width:	11.90m
Suits Land Length:	26.40m

Ground Floor Living:	130.02m ²
First Floor Living:	113.20m ²
Garage:	33.29m ²
Porch:	2.99m ²
Alfresco:	13.08m ²

Individual block suitability is based upon CDC greenfield setbacks and is subject to a full site analysis by our new home consultant. Contact one of our new home consultants for more information. Floorplans are not drawn to scale, should be used as a guide only and are drawn based on the standard façade. The layout and size of the home may vary depending on the chosen façade. Floorplans depict items not provided by Trend Connection Homes including: furniture and vehicles. Refer to working drawings for more information. The plans, facades and images shown are the exclusive property of Trend Connection Homes and must not be used, reproduced or copied wholly in any way without permission.

designed for
Regular Blocks.

