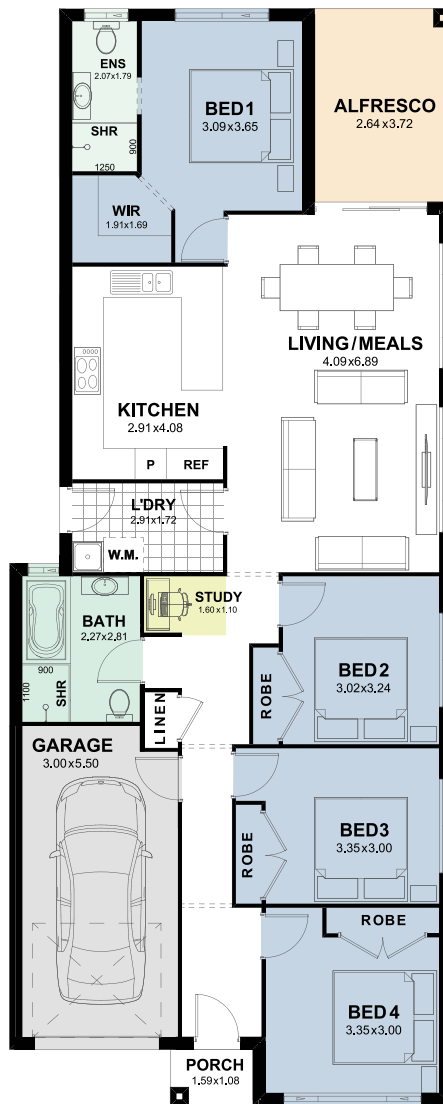


# Athens 18

Trend  
Connection  
Homes —



Total Area (m<sup>2</sup>) 165.06  
Squares 17.77



designed for  
**Narrow Blocks.**

## Features

- Open-plan living, dining and kitchen area
- Alfresco entertaining
- Study area
- Master suite with large walk-in-robe and ensuite
- All bedrooms with built-in-robos

## Specifications

House Width:	<b>8.51m</b>
House Length:	<b>21.11m</b>
House Size Squares:	<b>17.77<sup>SQ</sup></b>
House Area:	<b>165.06m<sup>2</sup></b>
Suits Land Width:	<b>9.70m</b>
Suits Land Depth:	<b>28.60m</b>
Alfresco:	<b>9.82m</b>
Garage:	<b>18.82m</b>
Porch:	<b>1.72m</b>
Living Area:	<b>134.70m</b>

Individual block suitability is based upon CDC greenfield setbacks and is subject to a full site analysis by our new home consultant. Contact one of our new home consultants for more information. Floorplans are not drawn to scale, should be used as a guide only and are drawn based on the standard façade. The layout and size of the home may vary depending on the chosen façade. Floorplans depict items not provided by Trend Connection Homes including; furniture and vehicles. Refer to working drawings for more information. The plans, facades and images shown are the exclusive property of Trend Connection Homes and must not be used, reproduced or copied wholly in any way without permission.