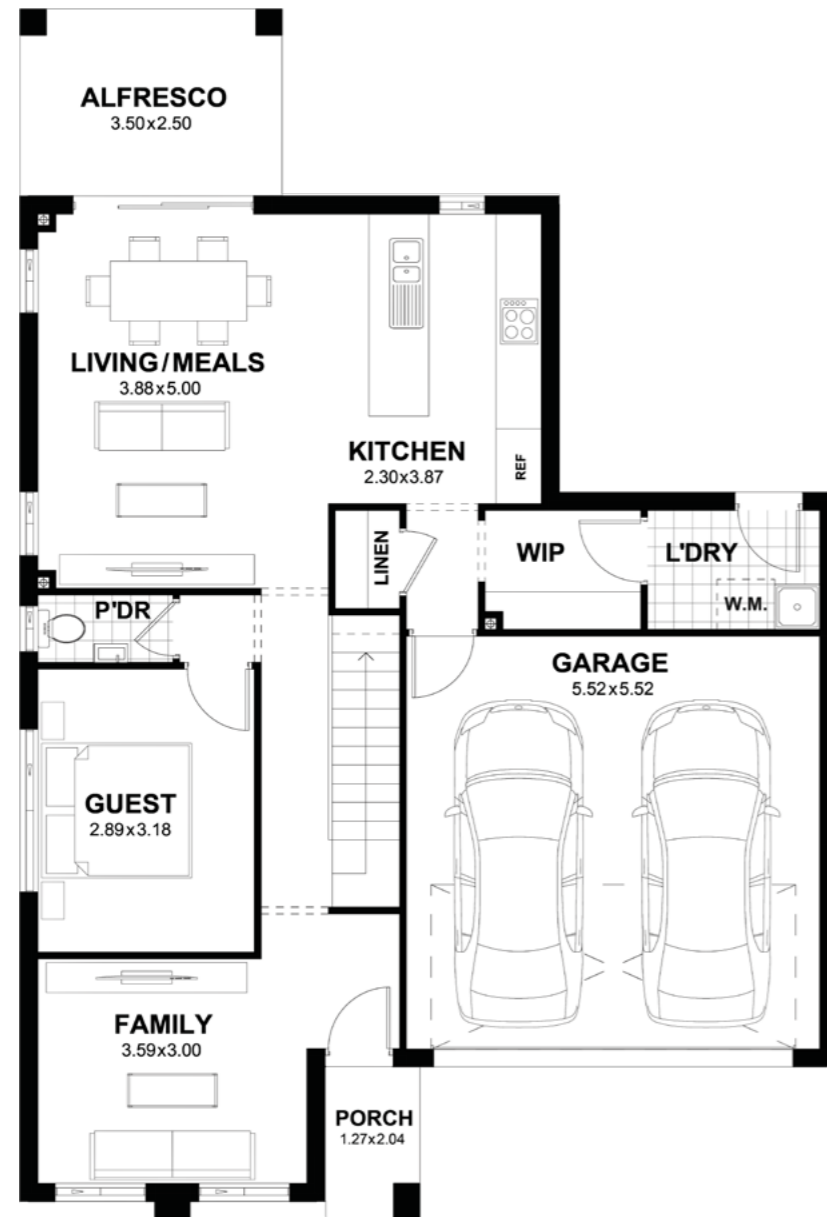


# Dublin 23

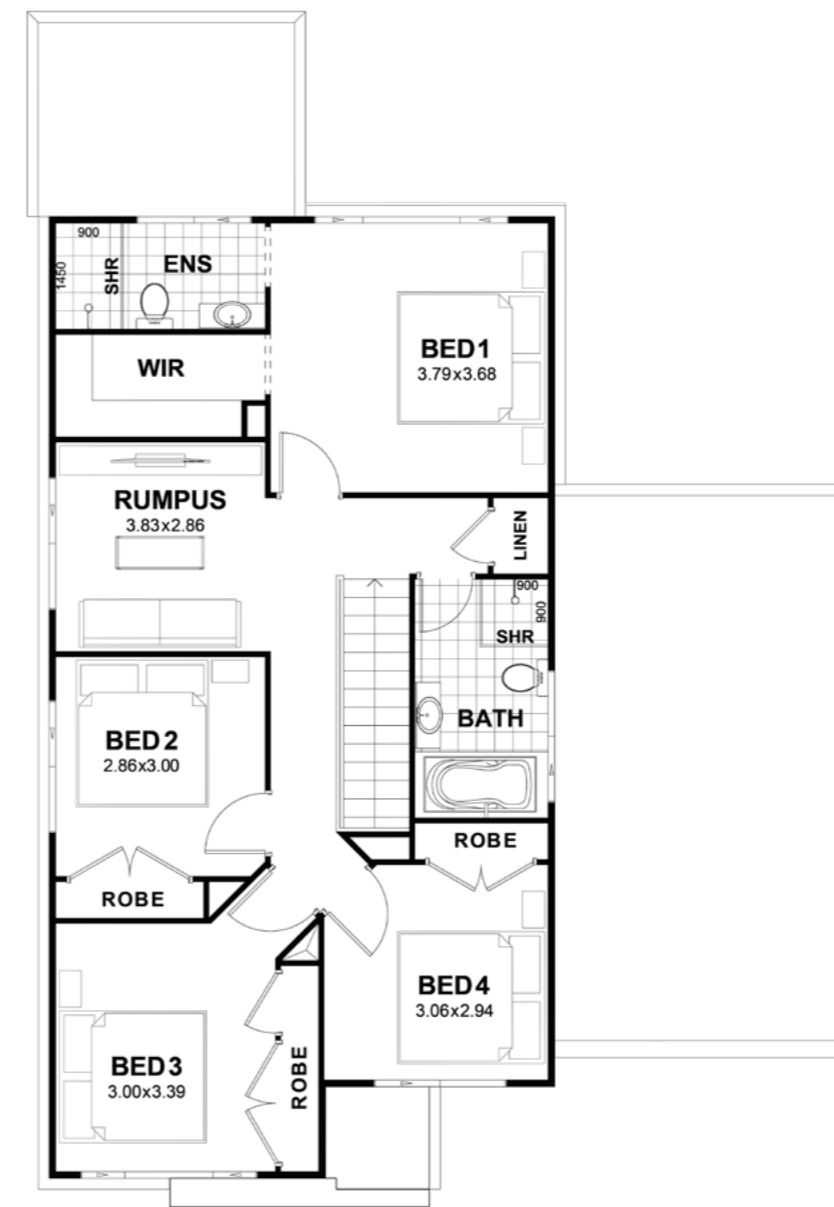
Trend  
Connection  
Homes

5 3 2.5 2

Total Area (m<sup>2</sup>) 217.61  
Squares 23.39



Ground  
Floor



First  
Floor

## Features

- Open-Plan living, dining and kitchen area
- Large walk-in pantry
- Kids breakout area
- Guest room
- Master Suite with large walk-in-robe and ensuite
- Alfresco
- Upstairs rumpus room

## Specifications

|                     |                      |
|---------------------|----------------------|
| House Width:        | 10.92m               |
| House Depth:        | 16.17m               |
| House Size Squares: | 23.39 <sup>SQ</sup>  |
| House Area:         | 217.61m <sup>2</sup> |
| Suits Land Width:   | 12.04m               |
| Suits Land Depth:   | 23.43m               |

|                      |                     |
|----------------------|---------------------|
| Ground Floor Living: | 86.49m <sup>2</sup> |
| First Floor Living:  | 86.68m <sup>2</sup> |
| Garage:              | 33.12m <sup>2</sup> |
| Porch:               | 2.57m <sup>2</sup>  |
| Alfresco:            | 8.75m <sup>2</sup>  |

Individual block suitability is based upon CDC greenfield setbacks and is subject to a full site analysis by our new home consultant. Contact one of our new home consultants for more information. Floorplans are not drawn to scale, should be used as a guide only and are drawn based on the standard façade. The layout and size of the home may vary depending on the chosen façade. Floorplans depict items not provided by Trend Connection Homes including: furniture and vehicles. Refer to working drawings for more information. The plans, facades and images shown are the exclusive property of Trend Connection Homes and must not be used, reproduced or copied wholly in any way without permission.

designed for  
Regular Blocks.

