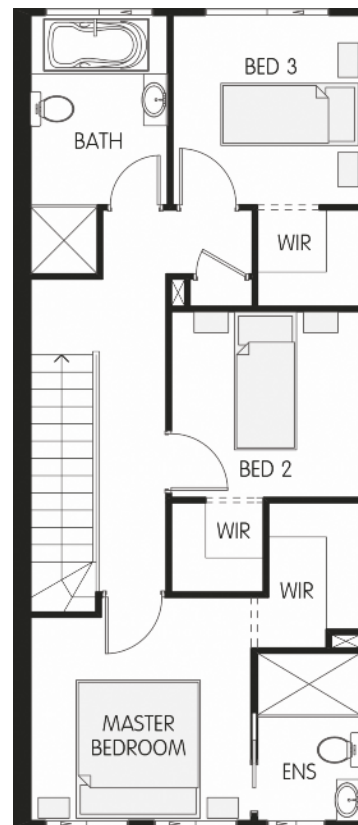
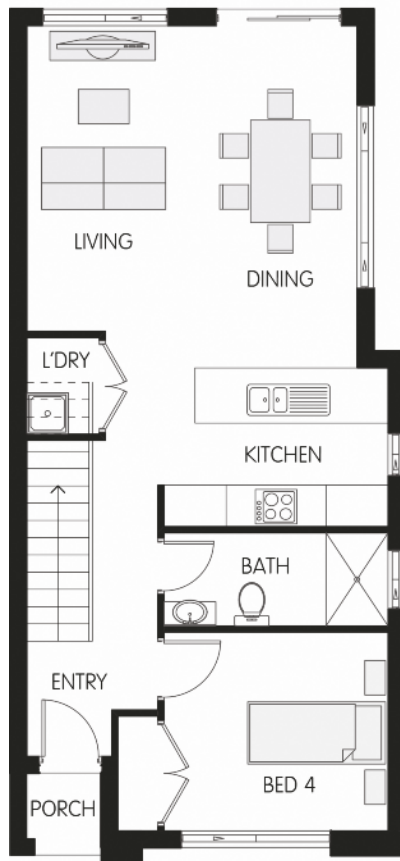
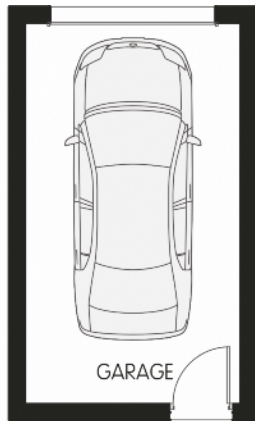


# APOLLO 16

4 1 3 1

MIN. LOT WIDTH# **6.7M**

MIN. LOT DEPTH# **26M**



STANDARD FLOORPLAN WITH AVENUE FACADE

## ROOM SIZES

ALL SIZES ARE IN METRES

Master	3,2 x 3,2	Kitchen	3,2 x 2,3
Bedroom 2	2,7 x 2,7	Living/Dining	4,8 x 4,4
Bedroom 3	2,7 x 2,7	Garage	3,1 x 5,5
Bedroom 4	3,2 x 2,8		

## SPECIFICATIONS

Ground Floor Living	65,97m <sup>2</sup>	Total	149,87m <sup>2</sup>   16,11sq
First Floor Living	60,67m <sup>2</sup>		
Garage	21,50m <sup>2</sup>	Width	5,72m
Porch	1,73m <sup>2</sup>	Length	12,39m

\* Sizes may vary slightly as per facade range. Floorplan is based on the Avenue Facade - see website and facade price list for RRP. The floor plans shown are for illustrative purposes only as they are not drawn to scale and may depict upgrade options not included in your New Home Tender. Inclusions and exclusions are as per your New Home Tender. No allowance has been made for any council regulations or estate requirements. It is the owner's responsibility to ensure that the house will fit on their land and that all applicable council regulations and estate requirements are met. Refer to final working drawings for complete and accurate dimensions.

# Minimum lot sizes & dimensions may vary subject to fall of land, easement detail, council & estate requirements.

# APOLLO 18

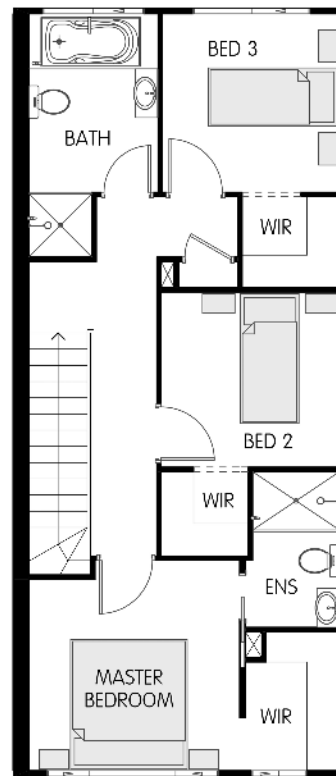
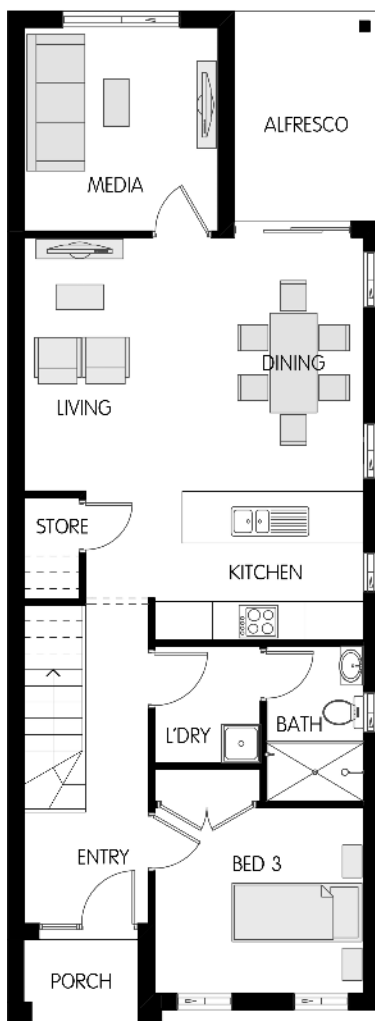
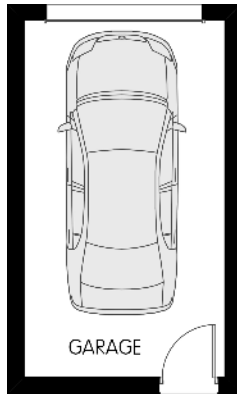
4 2 3 1

MIN. LOT WIDTH#

**7.5M**

MIN. LOT DEPTH#

**30M**



STANDARD FLOORPLAN WITH AVENUE FACADE

## ROOM SIZES

ALL SIZES ARE IN METRES

Master	3.2 x 3.2	Kitchen	3.2 x 2.3
Bedroom 2	2.7 x 2.7	Living/Dining	5.2 x 3.9
Bedroom 3	2.7 x 2.7	Garage	5.5 x 3.0
Bedroom 4	3.2 x 2.8	Alfresco	3.4 x 2.7

## SPECIFICATIONS

Ground Floor Living	78.86m <sup>2</sup>	Total	170.92m <sup>2</sup>   18.37sq
First Floor Living	60.67m <sup>2</sup>	Width	5.72m
Garage	21.50m <sup>2</sup>	Length	15.63m
Porch	2.63m <sup>2</sup>		
Alfresco	7.26m <sup>2</sup>		

\* Sizes may vary slightly as per facade range. Floorplan is based on the Avenue Facade - see website and facade price list for RRP. The floor plans shown are for illustrative purposes only as they are not drawn to scale and may depict upgrade options not included in your New Home Tender. Inclusions and exclusions are as per your New Home Tender. No allowance has been made for any council regulations or estate requirements. It is the owner's responsibility to ensure that the house will fit on their land and that all applicable council regulations and estate requirements are met. Refer to final working drawings for complete and accurate dimensions.

# Minimum lot sizes & dimensions may vary subject to fall of land, easement detail, council & estate requirements.

**TREND CONNECTION**  
HOMES

02 4648 4244 | [www.trendconnection.com.au](http://www.trendconnection.com.au)

# APOLLO 20

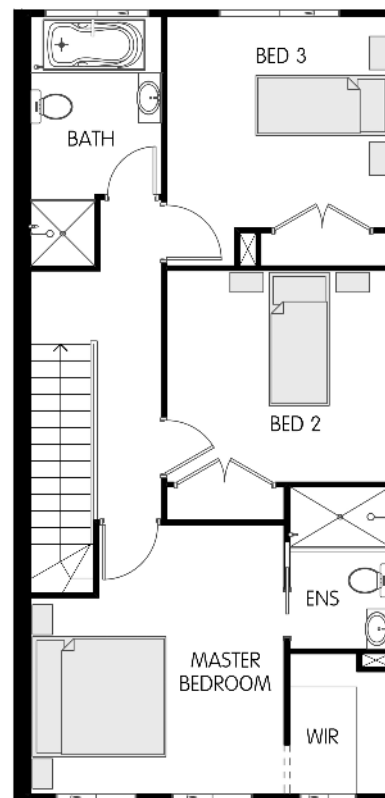
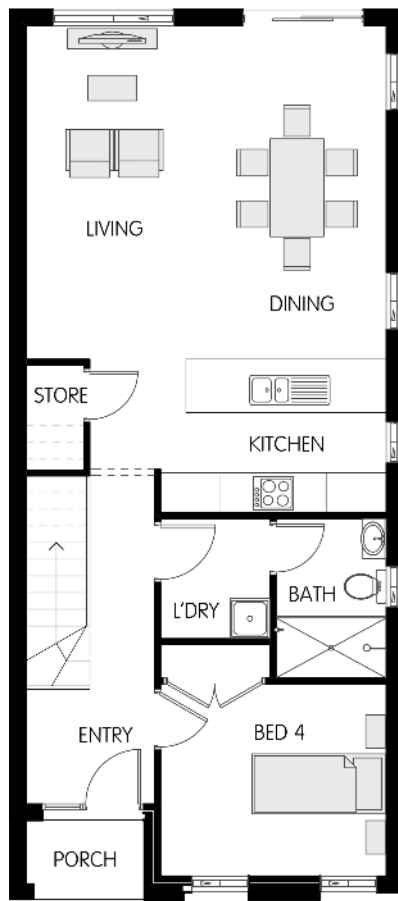
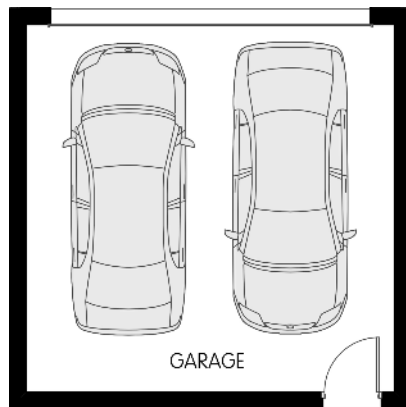
4 1 3 2

MIN. LOT WIDTH#

7.5M

MIN. LOT DEPTH#

28M



STANDARD FLOORPLAN WITH AVENUE FACADE

## ROOM SIZES

ALL SIZES ARE IN METRES

Master	3.8 x 4.0	Kitchen	3.3 x 2.3
Bedroom 2	3.3 x 3.1	Living/Dining	5.3 x 5.0
Bedroom 3	3.3 x 3.1	Garage	5.5 x 5.5
Bedroom 4	3.3 x 2.8		

## SPECIFICATIONS

Ground Floor Living	75.74m <sup>2</sup>	Total	181.79m <sup>2</sup>   19.54sq
First Floor Living	67.78m <sup>2</sup>		
Garage	35.88m <sup>2</sup>	Width	5.87m
Porch	2.39m <sup>2</sup>	Length	13.47m

\* Sizes may vary slightly as per facade range. Floorplan is based on the Avenue Facade - see website and facade price list for RRP. The floor plans shown are for illustrative purposes only as they are not drawn to scale and may depict upgrade options not included in your New Home Tender. Inclusions and exclusions are as per your New Home Tender. No allowance has been made for any council regulations or estate requirements. It is the owner's responsibility to ensure that the house will fit on their land and that all applicable council regulations and estate requirements are met. Refer to final working drawings for complete and accurate dimensions.  
# Minimum lot sizes & dimensions may vary subject to fall of land, easement detail, council & estate requirements.